

# Spigot Attachement Devices

For combat aircraft



/ Fuselage or wing pylon  
attachment devices

/ High level of reliability

/ Easy management of pylon  
pre-loading

/ Easy to operate

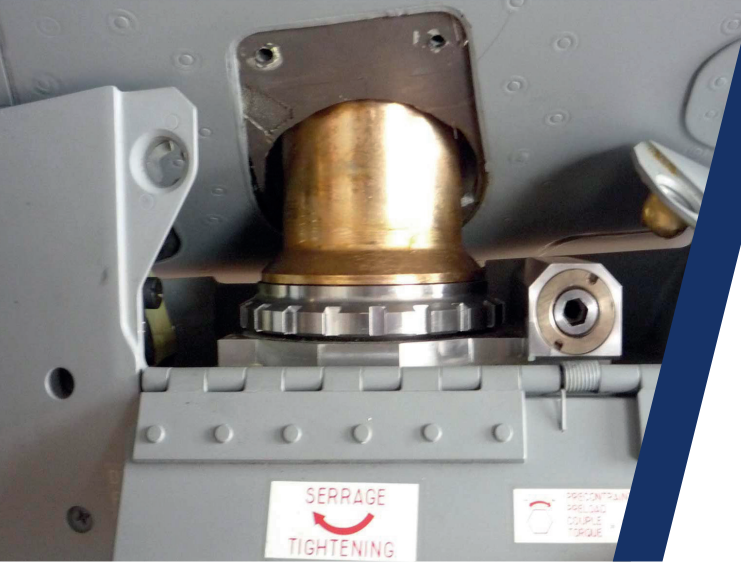


[aresia.com](http://aresia.com)



# SPIGOT ATTACHMENT DEVICES

For combat aircraft



## TECHNICAL CHARACTERISTICS

Weight :  
from 1,5 kg (3,3 lbs) to 13 kg (28,6lbs)

Height :  
from 120 mm to 450 mm

Ultimate axial load :  
from 135 kN to 450 kN

Roller type locking system

Mechanical or hydraulic pre-loading

## MAIN FEATURES

The fuselage or wing pylon attachment devices consists of a spigot and its matching female counterpart (tulip) fitted in the aircraft.

Dedicated to quick and easy connection of fuselage and underwing pylons.

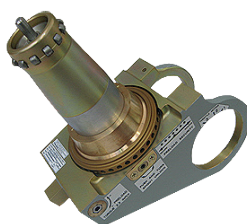
Customized to different types of aircraft (specific design).

## EXAMPLES OF INSTALLATION

In operational service and combat proven on Mirage 2000, Typhoon, Rafale, Mirage F1.



A158 tulip



Spigot A185



Spigot A190



Spigot A215

